



# SonicWALL CDP Site-to-Site Backup

BACKUP AND RECOVERY

**Automatic, Real-time Data Backup—Locally and Offsite**

- **Continuous Offsite Data Protection**
- **Minimal bandwidth impact**
- **Point-and-click data recovery**
- **AES 256-bit encryption**
- **Confidential encryption key**
- **Flexible configuration**
- **Bandwidth throttling**

When disasters strike, small-to-medium-size businesses (SMBs) are more financially sensitive to business disruption than larger enterprises. This is because SMBs are more vulnerable to lost revenues and productivity when vital business systems and data become unavailable. In today's highly-competitive 24x7 marketplace, losing even a single day's data—including communications and transactions with prospects, customers, suppliers and partners—can put an SMB at risk of going out of business. In an emergency, it is essential for SMBs to minimize business systems downtime and quickly recover crucial data and applications.

Single-site backups alone are inadequate protection against fires, floods, earthquakes, or any other disaster that could make the primary site inaccessible or unviable. For fully effective disaster recovery, SMBs also need redundant backups at secondary data storage sites. Yet SMBs struggle to find solutions that offer comprehensive offsite or site-to-site backup and disaster recovery options, while still remaining cost-effective within SMB budgets.

SonicWALL® Continuous Data Protection (CDP) solutions provide automatic transparent onsite and offsite backup, as well as flexible disaster recovery options to fit the needs and budgets of any SMB, including Local Archiving, Bare Metal Recovery, Offsite Data Backup, and Site-to-Site Data Backup.

The SonicWALL CDP Site-to-Site Data Backup solution automatically replicates mission-critical data to a secondary offsite CDP appliance. All data is securely transmitted and encrypted in flight and at rest using industry 256-bit Advanced Encryption Standard (AES). Because the offsite appliance always stores the latest version of mission-critical data, administrators can easily recovery data and get SMB systems up and running quickly after a disaster.

## Features and Benefits

**Continuous Offsite Data Protection** ensures that current copies of files and multiple point-in-time versions of application data such as Exchange and SQL databases are replicated in real time to the offsite CDP Appliance for disaster recovery.

**Minimal bandwidth impact** on the network is ensured by only transmitting incremental changes to the offsite appliance.

**Point-and-click data recovery** enables the administrator to get business-critical systems up and running quickly and easily.

**AES 256-bit encryption key** ensures all data is securely transmitted and stored encrypted.

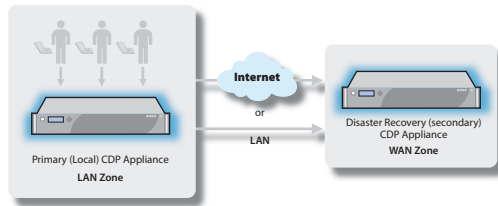
**Confidential encryption key** provides each end-user with total control of their data. SonicWALL employees have no access to the key.

**Flexible configuration** settings allow the administrator to send any or all mission-critical data residing on the CDP appliance to another CDP appliance.

**Bandwidth throttling** provides the ability to control the maximum allowable level of network traffic CDP can use to transmit data from a CDP Appliance to SonicWALL Offsite Portal or to another CDP Appliance, ensuring that network performance is at its highest level reserved for other priority applications during peak business hours.

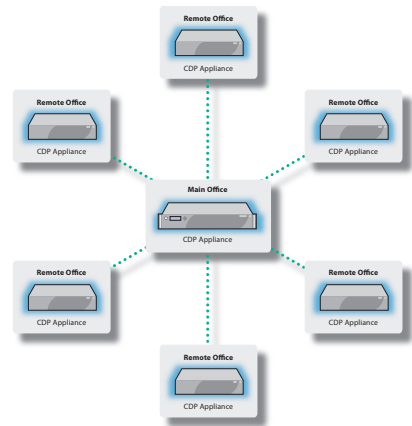
# Specifications

## SonicWALL Deployment Scenarios



### One-to-One Backup over the LAN, VPN or WAN

- Redundant backup within local network
- Additional layer of protection
- Eliminate data loss at a cost-effective price point
- Off-site data backup at secondary location protects against disasters at primary site



### Many-to-One Backup over the VPN / WAN

- Use in a distributed network for companies with branch offices
- Backup consolidation for branch office/remote office deployments



#### CDP Site-to-Site Backup

Site-to-Site Backup for 1 Appliance  
01-SSC-6480

Site-to-Site Backup for 3 Appliances  
01-SSC-6481

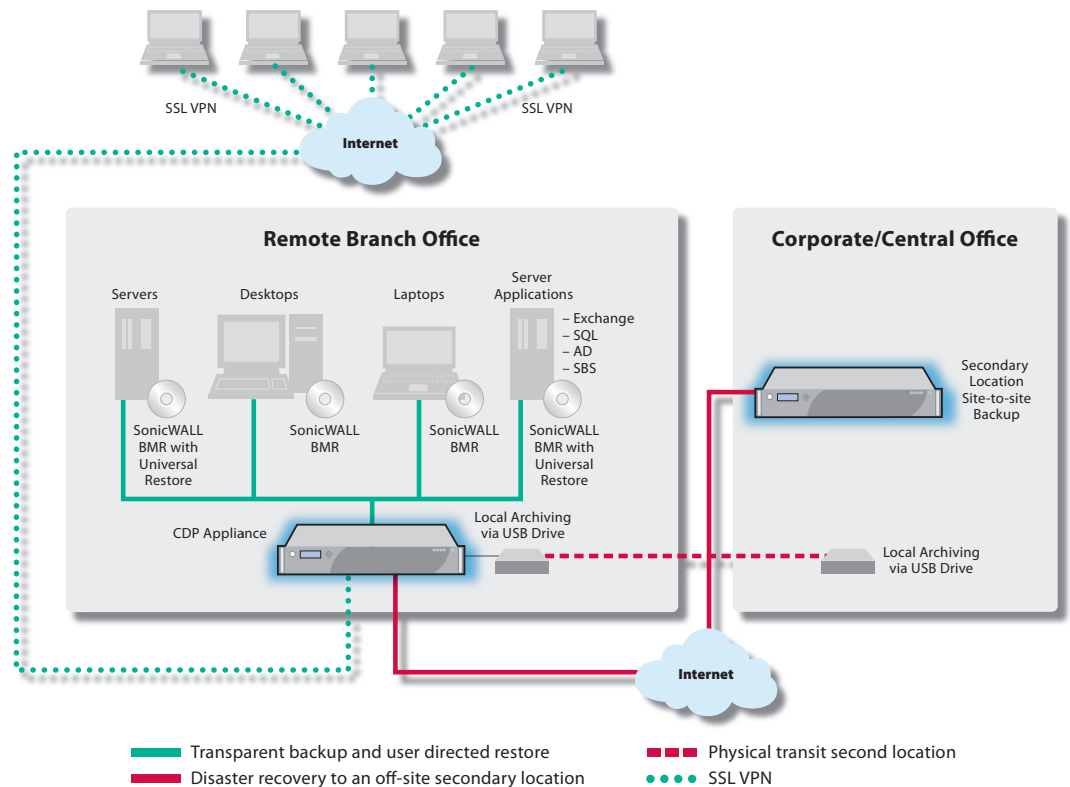
Site-to-Site Backup for 5 Appliances  
01-SSC-6482

Site-to-Site Backup for 10 Appliances  
01-SSC-6483

\*Must have a valid support contract to activate.

## Offsite Data Backup and Rapid Recovery of Data

SonicWALL CDP Site-to-Site Backup allows the administrator to perform rapid data recovery when local data has been rendered unrecoverable. Data should be recovered from another CDP in the event that a disaster renders local data corrupted, destroyed or otherwise unrecoverable.



For more information on SonicWALL's Backup and Recovery solutions, please visit [www.sonicwall.com](http://www.sonicwall.com).

#### SonicWALL, Inc.

2001 Logic Drive  
San Jose, CA 95124

T +1 408.745.9600  
F +1 408.745.9300

[www.sonicwall.com](http://www.sonicwall.com)

